

WEAR PROTECTION

AS&R can provide both Cut Protection and Wear Protection products.

There are many Protection Options available and there is an assortment of factors that could impact the performance of the protection chosen. It's important that a qualified person chooses the proper material to sufficiently protect the sling from edges or surfaces.

MATERIAL TYPES:

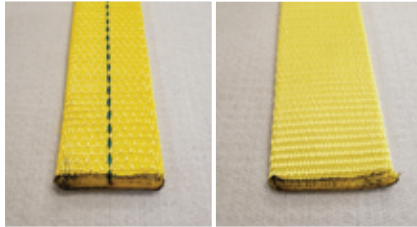
ABN

Bulked Nylon



**AWB-N /
AWB-P**

Nylon or Polyester Webbing



GG

Gator Grip
(Flat Sleeve or Sewn Only)



AFT516

5/16" Felt Pad



ALT

Heavy Leather



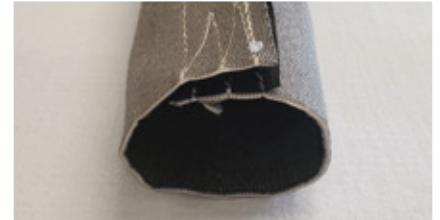
**APVC
PVC**



WEAR PAD TYPES:

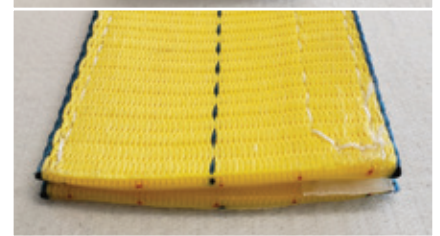
HLTS

Hook & Loop
Tubular Sleeve



HLFS

Hook & Loop
Flat Sleeve



TS

Tubular
Sleeve



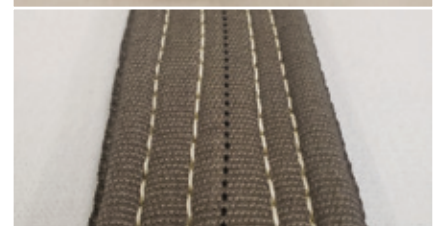
FS

Sewn Flat
Sleeve



KC

Komodo Cover
(Sewn on)



CUT PROTECTION

Cut Protection Features & Benefits:

- Provides greater resistance to sling cutting
- Prevents damage to the load surface
- Reduces bearing pressure amounts at contact areas
- Several Material options available
- Available in many lengths and widths

MATERIAL TYPES:

ACGL
Caiman Guard
Light Duty
3mm HMPE



ACGM
Caiman Guard
Medium Duty
5mm HMPE



ACGH
Caiman Guard
Heavy Duty
5.7mm HMPE



APE1S
1-Sided
Pelican Pro



APE2S
2-Sided
Pelican Pro



WEAR PAD TYPES:

HLTS
Hook & Loop
Tubular Sleeve



HLFS
Hook & Loop
Flat Sleeve



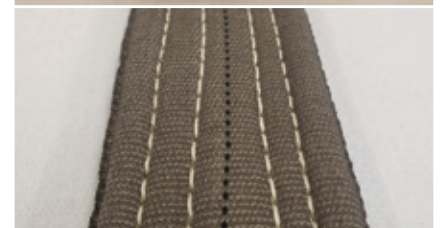
TS
Tubular
Sleeve



FS
Sewn Flat
Sleeve



KC
Komodo Cover
(Sewn on)



ACP
Corner
Protector



PROTECTION



HOOK & LOOP TUBULAR SLEEVE DIMENSIONAL INFORMATION

Bulked Nylon Part #	Webbing Part #	Felt 5/16" .3125 thickness Part #	Sleeve Width (in.) Part #	Big Easy Roundsling		Big Easy Braided Roundsling		Big Easy High Performance Roundsling		Wire Rope Diameter (in.)	Chain Size (Inches)
				Single Leg	Double Leg (EE)	6-Part (B6A)	8-Part (B8A)	Single Leg	Double Leg (EE)		
ABN-HLTS-4	AWB-HLTS-4		4							1/4	
ABN-HLTS-5	AWB-HLTS-5		5							5/16 - 1/2	
ABN-HLTS-6	AWB-HLTS-6		6	30 - 60				HP10		9/16 - 7/8	7/32
ABN-HLTS-8	AWB-HLTS-8		8	90 - 120 - 150	30 - 60			HP20 - HP30		1 - 1-1/2	9/32 - 3/8
ABN-HLTS-10	AWB-HLTS-10	AFT516-HLTS-10	10	180 - 240	90 - 120	30 - 60	30	HP40 - HP50	HP10	1-3/4 - 2	1/2 - 5/8
ABN-HLTS-12	AWB-HLTS-12	AFT516-HLTS-12	12	360 - 400	150 - 180	90	60	HP60 - HP80	HP20 - HP30	2-1/2	3/4
ABN-HLTS-14	AWB-HLTS-14	AFT516-HLTS-14	14	600 - 800	240		90	HP90 - HP125	HP40 - HP50		7/8 - 1
ABN-HLTS-16	AWB-HLTS-16	AFT516-HLTS-16	16	1000	360 - 400	120 - 150	120	HP150 - HP175	HP60 - HP80		1-1/4
ABN-HLTS-18	AWB-HLTS-18	AFT516-HLTS-18	18		600	180 - 240	150 - 180	HP200	HP90 - HP100		
ABN-HLTS-20	AWB-HLTS-20	AFT516-HLTS-20	20		800				HP125		
ABN-HLTS-22	AWB-HLTS-22	AFT516-HLTS-22	22		1000	360	240		HP150 - HP175		
ABN-HLTS-24	AWB-HLTS-24	AFT516-HLTS-24	24						HP200		
ABN-HLTS-26	AWB-HLTS-26	AFT516-HLTS-26	26			600	360				
ABN-HLTS-30	AWB-HLTS-30	AFT516-HLTS-30	30			800	600				
ABN-HLTS-34	AWB-HLTS-34	AFT516-HLTS-34	34			1000	800				

HOOK & LOOP FLAT SLEEVE DIMENSIONAL INFORMATION

Bulked Nylon Part #	Webbing Part #	Felt 5/16" .3125 thickness Part #	Sleeve Width (in.) Part #	Web Sling Width* (1-Ply & 2-Ply)	Big Easy Roundsling		Big Easy Braided Roundsling		Big Easy High Performance Roundsling		Wire Rope Diameter (in.)	Chain Size (Inches)
					Single Leg	Double Leg (EE)	6-Part (B6A)	8-Part (B8A)	Single Leg	Double Leg (EE)		
ABN-HLFS-3	AWB-HLFS-3	AFT516-HLFS-3	3	1					HP10		1/4 - 7/16	
ABN-HLFS-4	AWB-HLFS-4	AFT516-HLFS-4	4	2	30 - 60	30 - 60			HP20		1/2 - 3/4	7/32 - 9/32
ABN-HLFS-5	AWB-HLFS-5	AFT516-HLFS-5	5	3	90 - 120 - 150	60			HP30	HP10	7/8 - 1-1/8	3/8
ABN-HLFS-6	AWB-HLFS-6	AFT516-HLFS-6	6	4	180 - 240	90 - 120	30		HP40 - HP80	HP20	1-1/4 - 1-1/2	1/2
ABN-HLFS-8	AWB-HLFS-8	AFT516-HLFS-8	8	6	360 - 400	150 - 240	60	30	HP90 - HP125	HP30	1-3/4 - 2-1/4	5/8
ABN-HLFS-10	AWB-HLFS-10	AFT516-HLFS-10	10	8	600 - 800	360	90 - 120	60 - 90	HP150 - HP175	HP40 - HP80	2-1/2	3/4 - 7/8
ABN-HLFS-12	AWB-HLFS-12	AFT516-HLFS-12	12	10	1000	600	150 - 180	120 - 150	HP200	HP90 - HP125		1

* 3-Ply & 4-Ply sling: Use one size larger sleeve

** Width of sleeve may vary some based on the material used. This chart is used for approximate measurement.

SEWN FLAT SLEEVE DIMENSIONAL INFORMATION

Bulked Nylon Part #	Webbing Part #	Felt 5/16" .3125 thickness Part #	Sleeve Width (in.) Part #	Web Sling Width* (1-Ply & 2-Ply)	Big Easy Roundsling		Big Easy Braided Roundsling		Big Easy High Performance Roundsling		Wire Rope Diameter (in.)	Chain Size (Inches)
					Single Leg	Double Leg (EE)	6-Part (B6A)	8-Part (B8A)	Single Leg	Double Leg (EE)		
ABN-FS-3	AWB-FS-3	AFT516-FS-3	3	1	30 - 60						1/4 - 3/4	7/32
ABN-FS-4	AWB-FS-4	AFT516-FS-4	4	2	90 - 120 - 150	30 - 60			HP10		7/8 - 1-1/8	9/32 - 3/8
ABN-FS-5	AWB-FS-5	AFT516-FS-5	5	3	180 - 240	90 - 120	30		HP20 - HP30		1-1/4 - 1-1/2	1/2
ABN-FS-6	AWB-FS-6	AFT516-FS-6	6	4	360 - 400	150 - 180	60	30	HP40 - HP80	HP10	1-3/4	5/8
ABN-FS-8	AWB-FS-8	AFT516-FS-8	8	6	600 - 800	240 - 360	90 - 120	60	HP90 - HP100	HP20 - HP40	2 - 2-1/2	3/4 - 7/8
ABN-FS-10	AWB-FS-10	AFT516-FS-10	10	8	1000	600	150 - 180	90 - 150	HP125 - HP175	HP50 - HP80		1
ABN-FS-12	AWB-FS-12	AFT516-FS-12	12	10		800 - 1000	240	180	HP200	HP90 - HP125		1-1/4

*For 3-Ply & 4-Ply sling: Use one size larger sleeve

**Width of sleeve may vary some based on the material used. This chart is used for approximate measurement.