

WEAR PROTECTION

AS&R can provide both Cut Protection and Wear Protection products.

There are many Protection Options available and there is an assortment of factors that could impact the performance of the protection chosen. It's important that a qualified person chooses the proper material to sufficiently protect the sling from edges or surfaces.

Wear Protection Features & Benefits:

- Helps to extend the life of a sling by reducing abrasive wear
- Prevents damage to the load surface
- Several Material options available
- Can be easily attached by using hook & loop
- Available in many lengths and widths

MATERIAL TYPES:

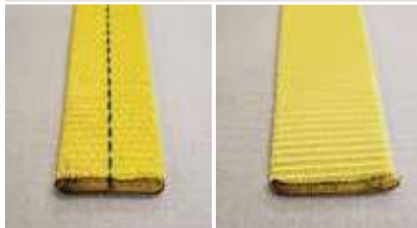
ABN

Bulked Nylon



AWB-N / AWB-P

Nylon or Polyester Webbing



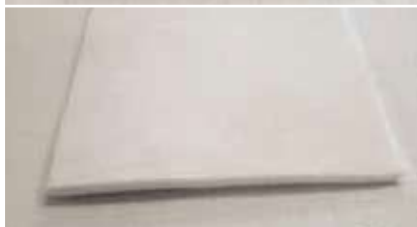
GG

Gator Grip
(Flat Sleeve or Sewn Only)



AFT516

5/16" Felt Pad



ALT

Heavy Leather



APVC

PVC



WEAR PAD TYPES:

HLTS

Hook & Loop
Tubular Sleeve



HLFS

Hook & Loop
Flat Sleeve



TS

Tubular
Sleeve



FS

Sewn Flat
Sleeve



KC

Komodo Cover
(Sewn on)



CUT PROTECTION

Cut Protection Features & Benefits:

- Provides greater resistance to sling cutting
- Prevents damage to the load surface
- Reduces bearing pressure amounts at contact areas
- Several Material options available
- Available in many lengths and widths

MATERIAL TYPES:

ACGH
Caiman Guard
Heavy Duty
5.7mm HMPE



APE1S
1-Sided
Pelican Pro



APE2S
2-Sided
Pelican Pro

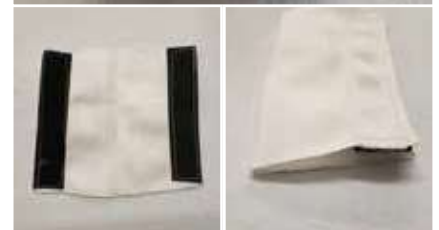


WEAR PAD TYPES:

HLTS
Hook & Loop
Tubular Sleeve



HLFS
Hook & Loop
Flat Sleeve



TS
Tubular
Sleeve



FS
Sewn Flat
Sleeve



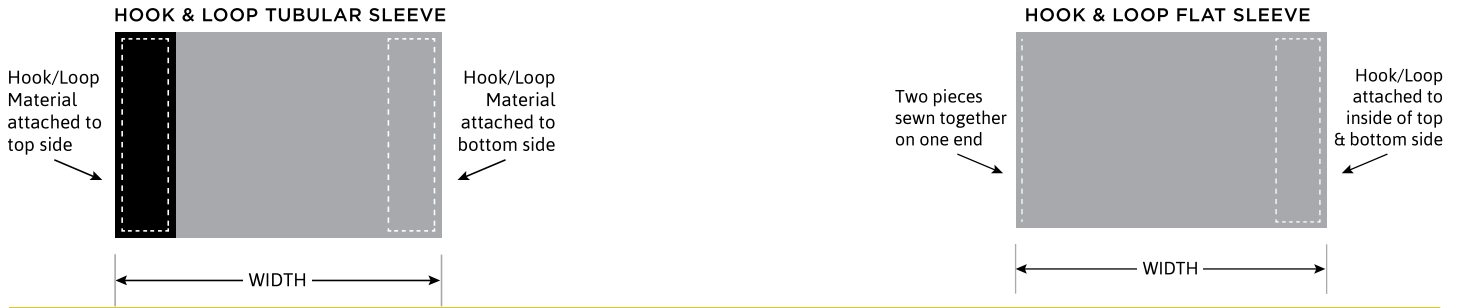
KC
Komodo Cover
(Sewn on)



ACP
Corner
Protector



PROTECTION



HOOK & LOOP TUBULAR SLEEVE DIMENSIONAL INFORMATION

Bulked Nylon Part #	Webbing Part #	Felt 5/16" .3125 thickness Part #	Sleeve Width (in.) Part #	Big Easy Roundsling		Big Easy Braided Roundsling		Big Easy High Performance Roundsling		Wire Rope Diameter (in.)	Chain Size (Inches)
				Single Leg	Double Leg (EE)	6-Part	8-Part	Single Leg	Double Leg (EE)		
ABN-HLTS-4	AWB-HLTS-4		4							1/4	
ABN-HLTS-5	AWB-HLTS-5		5							5/16 - 1/2	
ABN-HLTS-6	AWB-HLTS-6		6	30 - 60				BHP10		9/16 - 7/8	7/32
ABN-HLTS-8	AWB-HLTS-8		8	90 - 120 - 150	30 - 60			BHP20 - BHP30		1 - 1-1/2	9/32 - 3/8
ABN-HLTS-10	AWB-HLTS-10	AFT516-HLTS-10	10	180 - 240	90 - 120	30 - 60	30	BHP40 - BHP50	BHP10	1-3/4 - 2	1/2 - 5/8
ABN-HLTS-12	AWB-HLTS-12	AFT516-HLTS-12	12	360 - 400	150 - 180	90	60	BHP60 - BHP80	BHP20 - BHP30	2-1/2	3/4
ABN-HLTS-14	AWB-HLTS-14	AFT516-HLTS-14	14	600 - 800	240		90	BHP90 - BHP125	BHP40 - BHP50		7/8 - 1
ABN-HLTS-16	AWB-HLTS-16	AFT516-HLTS-16	16	1000	360 - 400	120 - 150	120	BHP150 - BHP175	BHP60 - BHP80		1-1/4
ABN-HLTS-18	AWB-HLTS-18	AFT516-HLTS-18	18		600	180 - 240	150 - 180	BHP200	BHP90 - BHP100		
ABN-HLTS-20	AWB-HLTS-20	AFT516-HLTS-20	20		800				BHP125		
ABN-HLTS-22	AWB-HLTS-22	AFT516-HLTS-22	22		1000	360	240		BHP150 - BHP175		
ABN-HLTS-24	AWB-HLTS-24	AFT516-HLTS-24	24						BHP200		
ABN-HLTS-26	AWB-HLTS-26	AFT516-HLTS-26	26			600	360				
ABN-HLTS-30	AWB-HLTS-30	AFT516-HLTS-30	30			800	600				
ABN-HLTS-34	AWB-HLTS-34	AFT516-HLTS-34	34			1000	800				

HOOK & LOOP FLAT SLEEVE DIMENSIONAL INFORMATION

Bulked Nylon Part #	Webbing Part #	Felt 5/16" .3125 thickness Part #	Sleeve Width (in.) Part #	Web Sling Width* (1-Ply & 2-Ply)	Big Easy Roundsling		Big Easy Braided Roundsling		Big Easy High Performance Roundsling		Wire Rope Diameter (in.)	Chain Size (Inches)
					Single Leg	Double Leg (EE)	6-Part	8-Part	Single Leg	Double Leg (EE)		
ABN-HLFS-3	AWB-HLFS-3	AFT516-HLFS-3	3	1					BHP10		1/4 - 7/16	
ABN-HLFS-4	AWB-HLFS-4	AFT516-HLFS-4	4	2	30 - 60	30 - 60			BHP20		1/2 - 3/4	7/32 - 9/32
ABN-HLFS-5	AWB-HLFS-5	AFT516-HLFS-5	5	3	90 - 120 - 150	60			BHP30	BHP10	7/8 - 1-1/8	3/8
ABN-HLFS-6	AWB-HLFS-6	AFT516-HLFS-6	6	4	180 - 240	90 - 120	30		BHP40 - B HP80	BHP20	1-1/4 - 1-1/2	1/2
ABN-HLFS-8	AWB-HLFS-8	AFT516-HLFS-8	8	6	360 - 400	150 - 240	60	30	BHP90 - BHP125	BHP30	1-3/4 - 2-1/4	5/8
ABN-HLFS-10	AWB-HLFS-10	AFT516-HLFS-10	10	8	600 - 800	360	90 - 120	60 - 90	BHP150 - BHP175	BHP40 - BHP80	2-1/2	3/4 - 7/8
ABN-HLFS-12	AWB-HLFS-12	AFT516-HLFS-12	12	10	1000	600	150 - 180	120 - 150	BHP200	BHP90 - BHP125		1

* 3-Ply & 4-Ply sling: Use one size larger sleeve

** Width of sleeve may vary some based on the material used. This chart is used for approximate measurement.

SEWN FLAT SLEEVE DIMENSIONAL INFORMATION

Bulked Nylon Part #	Webbing Part #	Felt 5/16" .3125 thickness Part #	Sleeve Width (in.) Part #	Web Sling Width* (1-Ply & 2-Ply)	Big Easy Roundsling		Big Easy Braided Roundsling		Big Easy High Performance Roundsling		Wire Rope Diameter (in.)	Chain Size (Inches)
					Single Leg	Double Leg (EE)	6-Part	8-Part	Single Leg	Double Leg (EE)		
ABN-FS-3	AWB-FS-3	AFT516-FS-3	3	1	30 - 60						1/4 - 3/4	7/32
ABN-FS-4	AWB-FS-4	AFT516-FS-4	4	2	90 - 120 - 150	30 - 60			BHP10		7/8 - 1-1/8	9/32 - 3/8
ABN-FS-5	AWB-FS-5	AFT516-FS-5	5	3	180 - 240	90 - 120	30		BHP20 - BHP30		1-1/4 - 1-1/2	1/2
ABN-FS-6	AWB-FS-6	AFT516-FS-6	6	4	360 - 400	150 - 180	60	30	BHP40 - BHP80	BHP10	1-3/4	5/8
ABN-FS-8	AWB-FS-8	AFT516-FS-8	8	6	600 - 800	240 - 360	90 - 120	60	BHP90 - BHP100	BHP20 - BHP40	2 - 2-1/2	3/4 - 7/8
ABN-FS-10	AWB-FS-10	AFT516-FS-10	10	8	1000	600	150 - 180	90 - 150	BHP125 - BHP175	BHP50 - BHP80		1
ABN-FS-12	AWB-FS-12	AFT516-FS-12	12	10		800 - 1000	240	180	BHP200	BHP90 - BHP125		1-1/4

*For 3-Ply & 4-Ply sling: Use one size larger sleeve

**Width of sleeve may vary some based on the material used. This chart is used for approximate measurement.