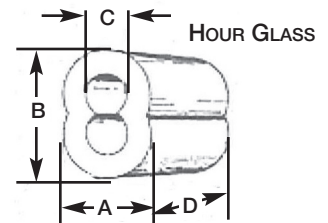


### ALUMINUM HOUR GLASS SLEEVES

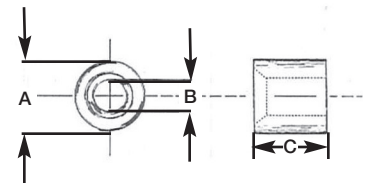
CABLE AND SLEEVE SIZE	A (IN.)	B (IN.)	C (IN.)	D (IN.)	PACKAGE QUANTITY
1/16"	0.172	0.250	0.078	3/8"	100
3/32"	0.278	0.404	0.125	1/2"	100
1/8"	0.343	0.500	0.156	5/8"	100
5/32"	0.375	0.562	0.187	11/16"	100
3/16"	0.440	0.665	0.223	1"	50
1/4"	0.536	0.818	0.290	1-1/8"	50
5/16"	0.687	1.031	0.375	1-1/4"	50
3/8"	0.750	1.156	0.438	1-7/16"	50



SLEEVES, WHEN PROPERLY APPLIED, ARE CAPABLE OF HOLDING THE RATED BREAKING STRENGTH OF THE CABLE TO WHICH THEY ARE APPLIED. HOWEVER, TO DETERMINE THE EXACT HOLDING STRENGTH, WE RECOMMEND PULL TESTING PRIOR TO USE. THIS STEP ENSURES THE PROPER SELECTION OF MATERIALS, THE CORRECT PRESSING PROCEDURE AND AN ADEQUATE MARGIN OF SAFETY FOR THE INTENDED USE.

### ALUMINUM STOP BUTTONS

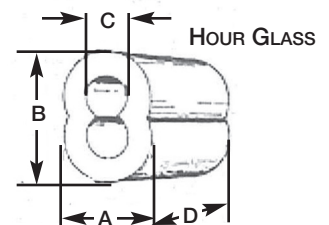
CABLE AND BUTTON SIZE	A (IN.)	B (IN.)	C (IN.)	PACKAGE QUANTITY
1/16"	0.250	0.078	5/32"	100
3/32"	0.344	0.112	5/16"	100
1/8"	0.344	0.152	5/16"	100
5/32"	0.437	0.185	11/32"	100
3/16"	0.437	0.216	11/32"	100
1/4"	0.688	0.281	11/16"	50
5/16"	0.688	0.375	11/16"	50
3/8"	0.688	0.406	11/16"	20



HOLDING STRENGTH IS APPROXIMATELY 1/3 OF RATED CABLE STRENGTH WHEN PROPERLY SWAGED.

### ZINC COATED COPPER HOUR GLASS SLEEVES

C (IN.) CABLE & SLEEVE SIZE	A (IN.)	B (IN.)	D (IN.)
3/32"	0.224	0.370	0.400
1/8"	0.327	0.492	0.554
3/16"	0.450	0.672	0.940
1/4"	0.515	0.809	1.110
5/16"	0.668	1.020	1.051
3/8"	0.728	1.113	1.236



### F.O.B. WAREHOUSE